

Application of Super Capacitor in Public Transport

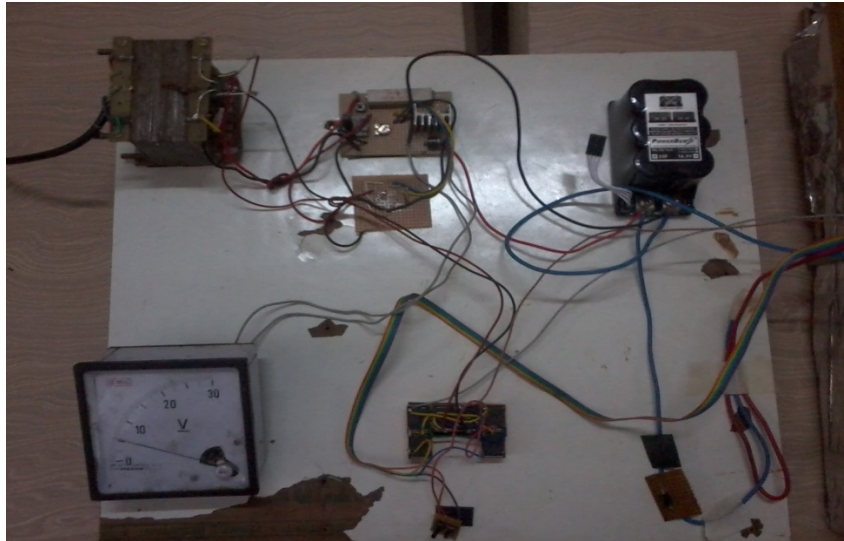
In the proto-type model a bus is designed which is an autonomous; it runs using energy stored by Super-Capacitor. In the project a group of three super-capacitors of 2.5 V and 350 F connected in series are used. The net voltage generated was 7.5 V and net capacitance 116.67 F. The initially charged bus moves, due to the energy stored in it by means of the super-capacitor and after the bus reaches the terminus it is charged by the super-capacitor kept at the stations. The Super-capacitors' at the stations are charged continuously by the use of charging circuit and are further connected to the carbon brush placed at the roof of the terminus. These carbon brushes collect the charge from the super-capacitor.

As the bus reaches the stations the carbon brush passes the charge to the copper plates placed at the top of the Capa-bus. These copper plates which are further connected to the super-capacitor placed inside the bus collects the charge from the carbon brush and charges the super-capacitor placed inside the bus. So as the passengers' move outside the bus and the other passengers' gets inside the bus, the bus is fully charged again, to move on and the process repeats as the bus reaches the another bus station.

Guided by: Dr .S. G. Tarnekar / Prof. P. R. Sawarkar

Projectees:- Harpreet Singh, Diwakar Pandey, Nilesh Kumar

CHARGING STATION



COMPLETE SET-UP

